

# Portable, High Energy, Immediate DR Imaging

**100% Portable: Thinnest Digital Imager in the World!**

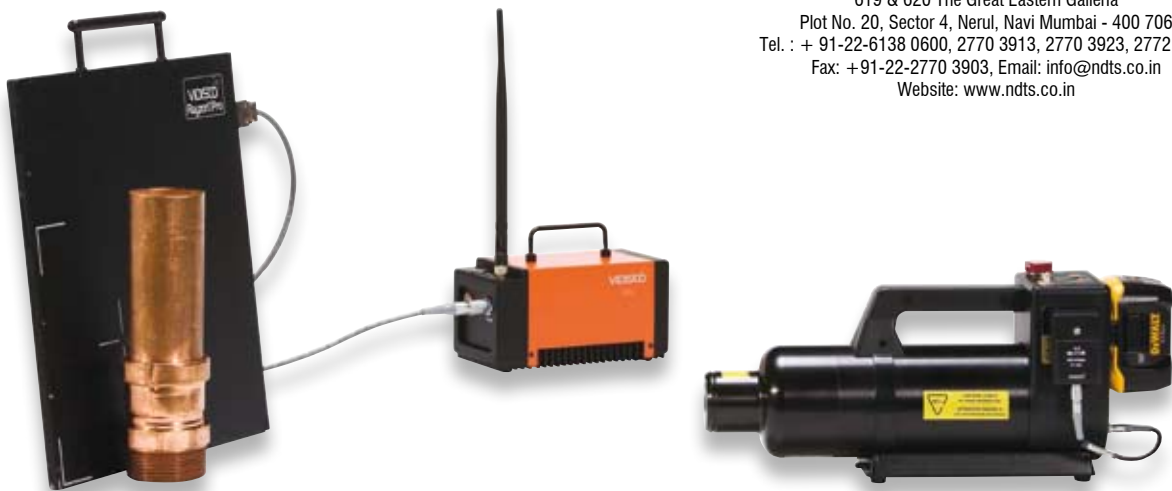
**Fully Battery Operated, Built in Wireless!**

**Best Image Quality Available!**

**Immediate Images at a Click of a Button!**



**NDTS India (P) Limited**  
619 & 620 The Great Eastern Galleria  
Plot No. 20, Sector 4, Nerul, Navi Mumbai - 400 706  
Tel. : + 91-22-6138 0600, 2770 3913, 2770 3923, 2772 9077  
Fax: +91-22-2770 3903, Email: info@ndts.co.in  
Website: www.ndts.co.in

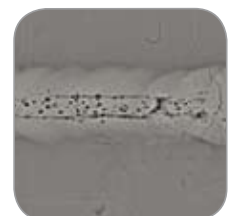


## RayzorXPro

Vidisco's portable **RayzorXPro** enables fast setup under any conditions, at any location – either on site, outdoors or in the laboratory. With the super thin **RayzorXPro** imager and integrated wireless options, you can conduct X-ray inspections anywhere, without cables. Highest quality, razor sharp images are created with a click of a button and analysis can be conducted on your laptop immediately, in situ.

The **RayzorXPro** Digital Detector Array (DDA) provides the best image quality allowing for the highest detection level in the market. Fast image generation, proprietary software enhancement analysis tools and efficient operation dramatically speed inspection, increasing NDT profitability.

Digital Radiography (DR) is the most advanced X-ray technology available. Vidisco continues to be the innovation leader in X-ray.



# Portable, High Energy, Immediate DR Imaging

## RayzorXPro

### Smart ICU

- Rock solid & reliable
- Powerful CPU: Fastest data transmission
- Built in super fast wireless data transfer (proprietary sequence)
- Built in wireless X-ray
- Charging during operation
- Digital display
- All weather design
- Tripod mountable



- **Modular Design:** Easy setup, dual use, in the lab or field. Compatible with portable and industrial Pulsed or Continuous Potential X-ray sources, as well as Isotope sources.
- **Top Image Quality:** 14 bit dynamic range (16,384 Grey levels) and 3.5 lp/mm resolution.
- **Minimal Electronic Noise:** Excellent Signal to Noise Ratio (SNR) and lowest internal scattering.
- **Image on Screen within Seconds!** No repositioning, results shown immediately. No developing! No scanning! No chemicals!
- **Best ROI in the Market!** Efficient operation increases NDT profitability and operator safety. Exposure times dramatically shortened, plant disruption minimized! Images available immediately for on-site analysis, and stored in database for future review & monitoring.
- **Wireless Solutions:** Built in fast wireless 200m, and special 750m long range package. High powered wireless up to 1500m (line of sight).
- **Wireless X-ray:** Operates with Pulsed X-ray sources.
- **Advanced Software:** Easy to repeat testing procedures, 800% zoom and other proprietary algorithms, user friendly.
- **Automatic, Precise Wall Thickness Measurement Function.**
- **Complies with Current Industry Standards.**
- **100% Battery Operation:** Over 5 hours of continuous work on site. Charging during AC operation, including battery capacity display.
- **Plug & Play:** One platform also operates the FlashXPro large area imager; easily interchangeable.

<b>Imaging Area:</b>	222 X 222 mm (~9 X 9 inch) 5mm from bottom and 7 mm from detector side
<b>Imager Size:</b>	360 X 330 X 13 mm (h,w,d) Thinnest Imager in the World! 14.2 X13 X 0.5 inch
<b>Imager Weight:</b>	3.5 Kg
<b>Imager Sensor Type:</b>	Amorphous Silicon (a-Si) Digital Detector Array (DDA) Flat Panel Imager
<b>Dynamic Range:</b>	14 bit (16,384 Grey levels)
<b>Resolution:</b>	3.5 lp/mm
<b>Power Supply:</b>	Over 5 hours of battery operation/ AC 110/220V for unlimited period of time
<b>Optional Accessories Available:</b>	<b>WiFi X:</b> Digital Wireless System - connecting laptop to ICU/imager (200m line of sight) <b>WiFi X LR:</b> Long Range Wireless Option - up to 750m( line of sight) <b>Dual WiFi X LR:</b> Long Range Wireless Option - up to 1500m (line of sight) <b>WXR:</b> Wireless X-ray – eliminates cable connection to X-ray <b>Extension Cable:</b> up to 200m distance <b>DC/AC Vehicle Inverter:</b> for unlimited power supply from a vehicle – power down the line. <b>Tripod Mount:</b> compatible with standard tripod <b>Protective Cover:</b> Lighter and improved, for convenient use outside <b>External Camera:</b> for external color images & Video <b>XR-DE:</b> Dual Energy Module for Organic/Inorganic Detection
<b>Software:</b>	Advanced proprietary <b>XbitPro</b> software for NDT applications