

Contrôle

Mesure

Systèmes

**NDTS**®

NDTS India (P) Limited

619 & 620 The Great Eastern Galleria

Plot No. 20, Sector 4, Nerul, Navi Mumbai - 400 706

Tel. : + 91-22-6138 0600, 2770 3913, 2770 3923, 2772 9077

Fax: +91-22-2770 3903, Email: info@ndts.co.in

Website: www.ndts.co.in

# Eddyscan Zet@Micro



***A NEW SYSTEM FOR  
FLAW DETECTION BY EDDY CURRENT***

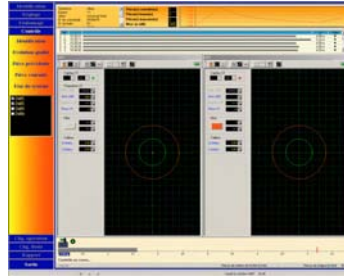
*High performances for lowest costs*

**Economical eddy current testing with latest digital electronic technology for automatic high resolution bi-channels on line or off line.**

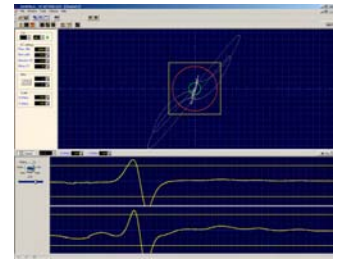
**Flaw detection made of austenitic, ferrous and non ferrous steel metal.**

**Real time display of the process**

**Universal testing system, reliable for all applications and normative requirements (ASTM, API, DIN, SEP...)**



*Production screen*



*Setting screen*

*Sectorial inspection*

*Full body magnetizing unit for in line inspection*



*Automotive parts inspection*

<u><b>General</b></u>	
Microsoft Windows XP PRO environment	Gain : up to 70dB, by step of 0.5dB
Stand alone computer connection and disconnection during functions	Phase : 0 to 360°, by step of 1Hz
Remote assistance from CMS headquarters	Output current : up to 250 mA
USB 2.0 port for connection to a computer	Continuous filters : high pass, low pass, band pass with adjustable severity & auto filtering, Range : 1Hz to 4KHz, by step of 1 Hz
Built for rack mounted in VME standard	High precision balancing, manual or automatic
Height x Width x Depth: 262 x 106 x 231 mm	Up to 2 circular or rectangular alarms by channel
Weight: 3.2 Kg	1 digital input
Wide power supply range : 100-240VAC – 50/60Hz	8 digital outputs
<u><b>Eddy current operations</b></u>	
Display : Lissajou and/or Time base	3 analog outputs
Up to 2 channels, absolute and / or differential mode	1 encoder input (optional)
Probe connexion mode : bridge / transformer	Sample frequency : 5KHz
Frequency range : 10Hz to 2MHz, with 1Hz tuning resolution	Very high level of accuracy for setting
Injection voltage : 0.1V to 15V, with 0.1V tuning resolution	Sensor's auto check
	Plug&Play, jumper less